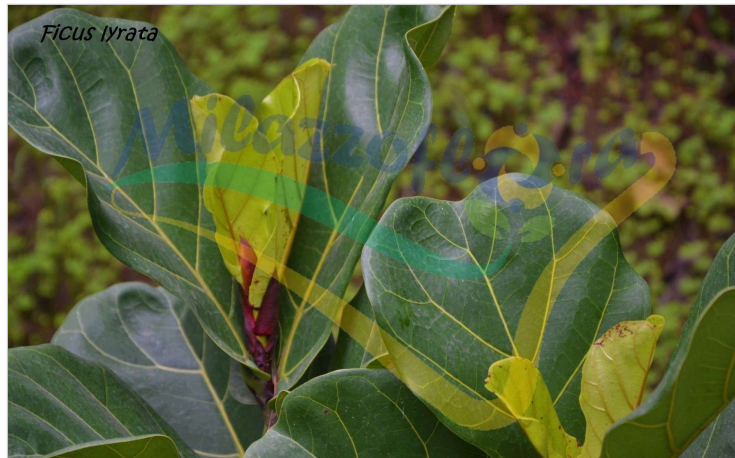


## Fiddle-leaf fig



*Ficus lyrata*, commonly known as the fiddle-leaf fig, is a species of family Moraceae. It is native to western Africa, from Cameroon west to Sierra Leone, where it grows in lowland tropical rainforest.

It is a banyan fig (*Ficus* subgenus *Urostigma*) that commonly starts life as an epiphyte high in the crown of another tree. It can also grow as a free-standing tree on its own, growing up to 12–15 m (39–49 ft) tall. The leaves are variable in shape, but often with a broad apex and narrow middle, resembling a lyre or fiddle; they are up to 45 cm (18 in) long and 30 cm (12 in) broad, though usually smaller, with a leathery texture, prominent veins and a wavy margin.

The fruit is a green fig 2.5–3 cm (1-¼ in) diameter. It is a popular ornamental tree in subtropical and tropical gardens, and is also grown as a houseplant in temperate areas, where it usually stays shorter and fails to flower or fruit. It requires indirect natural light. It is hardy down to 10 °C (50 °F), so specimens may be placed outside during warm periods.

available upon request

**Category:** Indoor plants

**Families:** Moraceae

**Genus:** Ficus

**Species:** lyrata

**Geographical Area of Origin:** Middle-north africa

**Climatic Zones:** Tropical USDA 11

**Habit:** Tree

**Leaves:** Evergreen

**Colore Foglie:** Verde 

**Flowering Period:** Giugno / Luglio / Agosto / Settembre

**Flower:** Simple flower

**Colore Fiori:** Giallo 

**Favorite soil:** Sub-acid / medium acid / Middle-Dough / Medium soil

**Water needs:** Medium



[www.milazzo flora.it](http://www.milazzo flora.it)

**Light Exposure:** Medium shade / Half shade / Full light / Full sun

**Form:** Wired on stick / Plant on cane

**Colore Frutti:** Marrone 